



PowerFLEX™ BIPV

The Most Powerful Rooftops on the Planet

PowerFLEX 2-meter



Designed specially for rooftops

Integrates with roofing surface

- No mounting hardware
- No roof penetrations
- No wind load

Flexible module

- Fits all roof types and shapes
- Durable, non-breakable

Light weight

- 2.5 kg/m² (0.5 lb/ft²) with adhesive
- No structural reinforcement required

More energy per roof

High efficiency CIGS

- 10.5% to 12.6% aperture efficiency
- 50% more efficient than flexible a-Si

High performance

- Performs in all light conditions
- Shade tolerant

Covers entire roof area

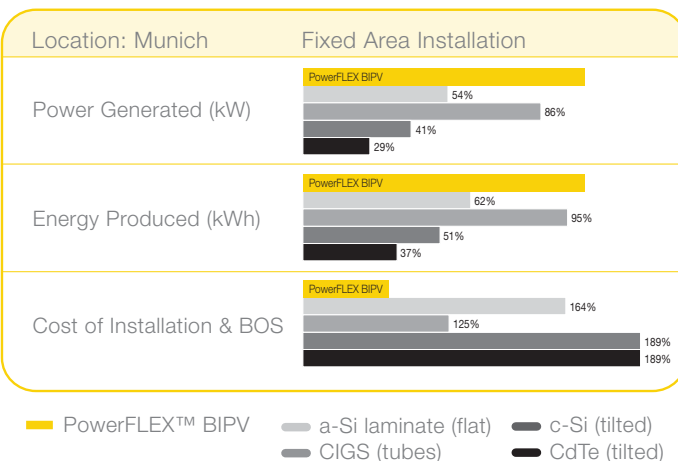
- Lays flat. No tilt required
- Minimum module spacing required

Lower installed system costs

Large format module

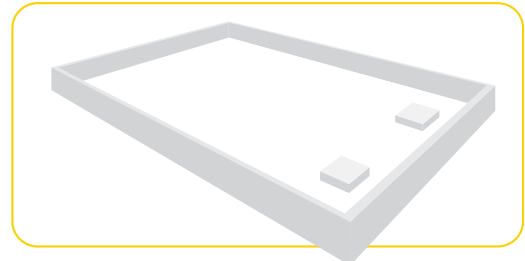
- 250-300 Watts
- 5.74m x 0.49m dimensions
- 30% to 40% savings in BOS & installation costs

How PowerFLEX™ BIPV compares

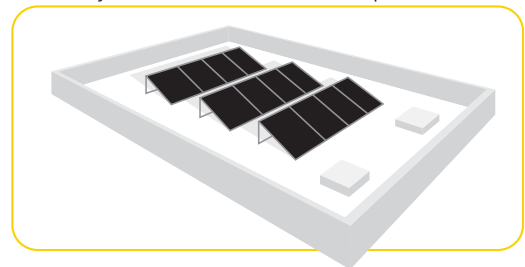


More power per roof with lower BOS & installation costs

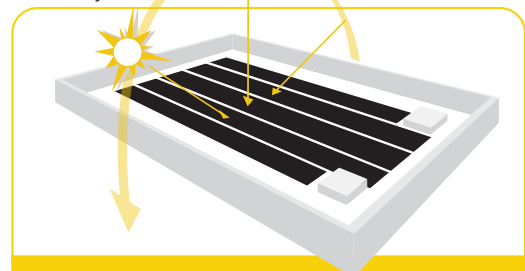
This is your roof



This is your roof with tilted solar panels



This is your roof with PowerFlex™ BIPV



More surface area covered plus higher performance equals more power to you

Electrical Specifications*

Capacity rating	P _{max}	100 W	90 W
Tolerance of P _{max}	%	± 5%	± 5%
Module aperture area efficiency	%	12.7%	11.4%
Rated voltage	V _{mpp}	17.5 V	16.4 V
Rated current	I _{mpp}	5.7 A	5.5 A
Open circuit voltage	V _{oc}	23.7 V	23.6 V
Short circuit current	I _{sc}	6.4 A	6.3 A

*Measured at (STC) Standard Test Conditions: 25°C, 1 kW/m² insolation, AM 1.5

Temperature Coefficients

Maximum power	-0.43%/°C
Maximum voltage	-0.38%/°C
Open circuit voltage	-0.33%/°C
Short circuit current	-0.03%/°C

Mechanical Specifications

Dimensions	2013x494x3.5 mm (79x19.4x0.13 in)
Weight	2.2 kg (nominal weight with adhesive) 2.2 kg/m ² (nominal weight with adhesive)
Junction Box	Junction box with bypass diode
Cables	Locking
Front Sheet	ETFE
Solar Cells	36 CIGS cells (210x100 mm)
Frame	None

Operating Conditions

Temperature Range	-40°C to + 85°C
Maximum System Voltage	1000 V

Certifications* and Warranty**

UL 1703, IEC 61646 / 61730, JEC, ICC-ES AC308
Materials and workmanship - 5 years
Power output - 25 years (90% @ 10 yrs; 80% @ 25 yrs)

*Early 2011 **Contact GSE for complete warranty terms



Also available in
6.0m x 0.5m modules

Global Solar® is a leading manufacturer of Copper Indium Gallium diSelenide (CIGS) thin-film solar on a flexible substrate. With plants in Tucson (Arizona, USA) and Berlin (Germany), Global Solar® operates with a total of 75MW of production capacity. An average cell efficiency above 11% makes the company the world leader in CIGS efficiency on flexible substrate in large scale production. Global Solar® has set several records for CIGS cell efficiency above 15%. Global Solar's® high efficiency material is sold to customers worldwide in multiple applications, including flexible laminates, solar shingles, glass modules and portable chargers.

Call Global Solar® to find out if PowerFLEX™ BIPV is right for you.



Global Solar® Energy, Inc.
8500 South Rita Road
Tucson, Arizona, 85747, USA
Phone: +1 (520) 546-6313
Fax: +1 (520) 546-6318
info@globalsolar.com
www.globalsolar.com

Global Solar® Energy Deutschland GmbH
Am Studio 16
12489 Berlin, Germany
Phone: +49 (30) 81879-9200
Fax: +49 (30) 81879-9222
info@de.globalsolar.com
www.globalsolar.com